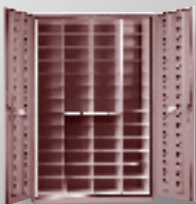




**MONTEL®**  
The Intelligent Use of Space

# Museum storage cabinets



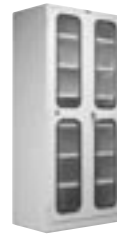
# Museum storage cabinets

## ***Conservation & Garment Cabinets***

Designed to provide a microclimate environment for your valuable collections.



**M336-15**



**M336-21**



**M348**



**M238**

### **DIMENSIONS**

<b>Width:</b>	39 15/32"	39 15/32"	51 15/32"	58 9/32"
<b>Depth:</b>	16 5/8"	22 5/8"	22 5/8"	30 3/8"
<b>Height:</b>	84"	84"	84"	84"

### **CAPACITY of storage space:**

23.7 cubic feet	33.8 cubic feet	44.2 cubic feet	69.8 cubic feet
-----------------	-----------------	-----------------	-----------------

## ***Entomology Cabinets***

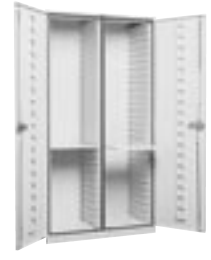
The sealed doors prevent the intrusion of light, dust, water, and vermin, thus protecting your irreplaceable specimens.



**M520**



**M521**



**M522**

### **DIMENSIONS**

<b>Width:</b>	23"	23"	43 15/16"
<b>Depth:</b>	20 3/8"	20 3/8"	20 3/8"
<b>Height:</b>	42 7/16"	84"	84"

## ***Geological & Zoological Cabinets***

These carefully crafted cabinets are ideal for heavy geological collections. They could be standard or custom designed to your specifications.



**M231**



**M232**

### **DIMENSIONS**

<b>Width:</b>	20 1/4"	20 1/4"
<b>Depth:</b>	25 1/2"	25 1/2"
<b>Height:</b>	42 7/16"	84"

### **CAPACITY of storage space:**

8.51 cubic feet	18.19 cubic feet
-----------------	------------------

*\*Cabinets dimensions may vary by +/- 1/16 inch.*

## Herbarium Cabinets

Available counter-high or full-height, single or double door, these cabinets provide 12, 26 or 52 storage compartments and can be equipped with convenient pull-out workshelves (optional).



**M240**



**M241**



**M242**

### DIMENSIONS

**Width:** 29 5/8"  
**Depth:** 19 1/8"  
**Height:** 42 7/16"

**Width:** 29 5/8"  
**Depth:** 19 1/8"  
**Height:** 84"

**Width:** 55"  
**Depth:** 19 1/8"  
**Height:** 84"

### COMPARTMENT DIMENSIONS

**Width:** 12 1/2"  
**Depth:** 17 1/2"  
**Height:** 5 13/16"

**Width:** 12 1/2"  
**Depth:** 17 1/2"  
**Height:** 5 13/16"

**Width:** 12 1/2"  
**Depth:** 17 1/2"  
**Height:** 5 13/16"

### CAPACITY

**of storage space:** 8.9 cubic feet  
 12 compartments

**of storage space:** 19.2 cubic feet  
 26 compartments

**of storage space:** 38.4 cubic feet  
 52 compartments

## Counter-High Stackable Cabinets

These cabinets are designed to house a wide variety of sliding trays, and drawers. The sealed doors prevent the intrusion of light, dust, water, and vermin, thus protecting your irreplaceable specimens.



**M205**



**M215**



**M220**

**M228**

### DIMENSIONS

**Width:** 28 29/32"  
**Depth:** 31 15/16"  
**Height:** 39 5/8"

**Width:** 28 3/8"  
**Depth:** 38 9/16"  
**Height:** 39 5/8"

**Width:** 56 3/4"  
**Depth:** 38 9/16"  
**Height:** 39 5/8"

**Width:** 48 15/16"  
**Depth:** 28 1/2"  
**Height:** 47 3/4"

### CAPACITY

**of storage space:** 15.5 cubic feet

**of storage space:** 18.1 cubic feet

**of storage space:** 39.8 cubic feet 30 cubic feet

## Stackable Flat-Drawer Cabinets

These flat-drawer cabinets feature a convenient counter-high, stackable design to help make the most of your floor space or - if not stacked - provide a useful extra working surface. Ideal for maps, drawings, prints, posters, firearms, jewellery, coins, stamps, etc.



**M402**



**M403**

**M413**

### DIMENSIONS

**Width:** 54 1/4"  
**Depth:** 40 1/4"  
**Height:** 17 5/8"

**Width:** 54 1/4"  
**Depth:** 40 1/4"  
**Height:** 17 5/8"

**Width:** 92"  
**Depth:** 60 3/4"  
**Height:** 17 5/8"

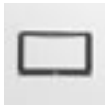
# Standard features



*Door-lift-off hinges  
(door easily removed for easy of transferring specimens)*



*Sealing-door seals with closed cell Elastomeric Seal™  
and three-point latching system*



*3"x5" label holder*

- Construction-solid heavy-gauge steel, reinforced welded
- Top-WaterShield™ cap top provides umbrella type protection for cabinet contents
- Hardware-heavy bright nickel-plated for long lasting protection
- Powder coating - museum quality Epoxy Polyester powder coating, non off-gassing
- Drawer-Easy-glide with Perma-Slide™ powder coating and cushioned bumpers for content safety

## **MATERIALS:**

All materials used in the fabrication, finishing and assembly of all cabinets and accessories have been tested. They have been certified to be safe and non off-gassing.

## **TESTING:**

Cabinet construction and seals have been tested for retention by an independent testing laboratory. Test results are available upon request.

## **WARRANTY:**

All cabinets and accessories are guaranteed to be free from defects in material and workmanship for a period of five years.

# Optional features



*Cabinet Lock*



*Vents with sliding closures plate*



*Perma-Slide™ drawer tracks*



*18-track Perma-Slide™ drawer panel*



*1 1/2" and 3 1/2"  
Easy-glide drawers*



*Adjustable standard or heavy duty shelves  
and full or half width drawers*



*Recessed door handle*



*Adjustable hat shelf/coat rod unit*



*Slide-out rolled textile storage unit with safety stops*



*Level-Ease™ swivel levelers  
accessible from inside the cabinet*

- Visual Lift Off Doors with silicone grommet seal and laminated safety glass
- Nickel-plated filter pocket that mounts behind vent
- Magnetic fumigant pocket
- Four swivel casters



**MONTEL®**

The Intelligent Use of Space

877-935-0236

system@montel.com - www.montel.com

SINCE  
1924

ISO  
9001:2000

