

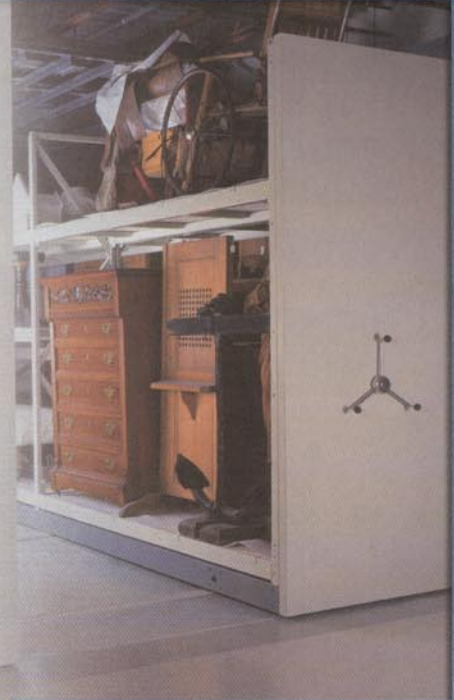


MONTEL
The Intelligent Use of Space

4D WIDE SPAN

4 POST STORAGE SYSTEMS

For fixed and compact storage applications, 4-D wide span shelving can be used with Montel Mobilex® carriages.



4D WIDE SPAN

4 POST STORAGE SYSTEMS



TECHNICAL SPECIFICATIONS

Boltless assembly, the connector is welded to the shelf bar. Shelf bars are assembled to the uprights. 100% shelf usage, accessible from both sides. No front or back sway bracing required. Each shelf is independently adjustable at 2" increments. Larger items may be stored directly on beams without using drop-in panels.

Drop-in Shelf Panels

- Shelf panels are inserted between shelf beams on ledge provided
- Easy to install
- No bolts are required for assembly
- Upright width dimension is used to determine the depth of the shelf panels (24", 30", 36", 42", 48")
- Locking pins are included to ensure positive positioning with shelf beams

Finish

- Baked enamel or powder coated
- Twelve standard colors available (see colors chart for more details)

SPECIFICATIONS

Model	Capacity	Width	Depth	Height
No. 4D-500	500 pds	48"	24"	60"
		60"	30"	72"
		72"	36"	84"
		84"	42"	96"
		96"	48"	108"
No. 4D-1500	1500 pds	48"	24"	60"
		60"	30"	72"
		72"	36"	84"
		84"	42"	96"
		96"	48"	108"
				120"

SINCE
1924

MONTEL
9001:2000



MONTEL
The Intelligent Use of Space

877-935-0236

system@montel.com - www.montel.com

